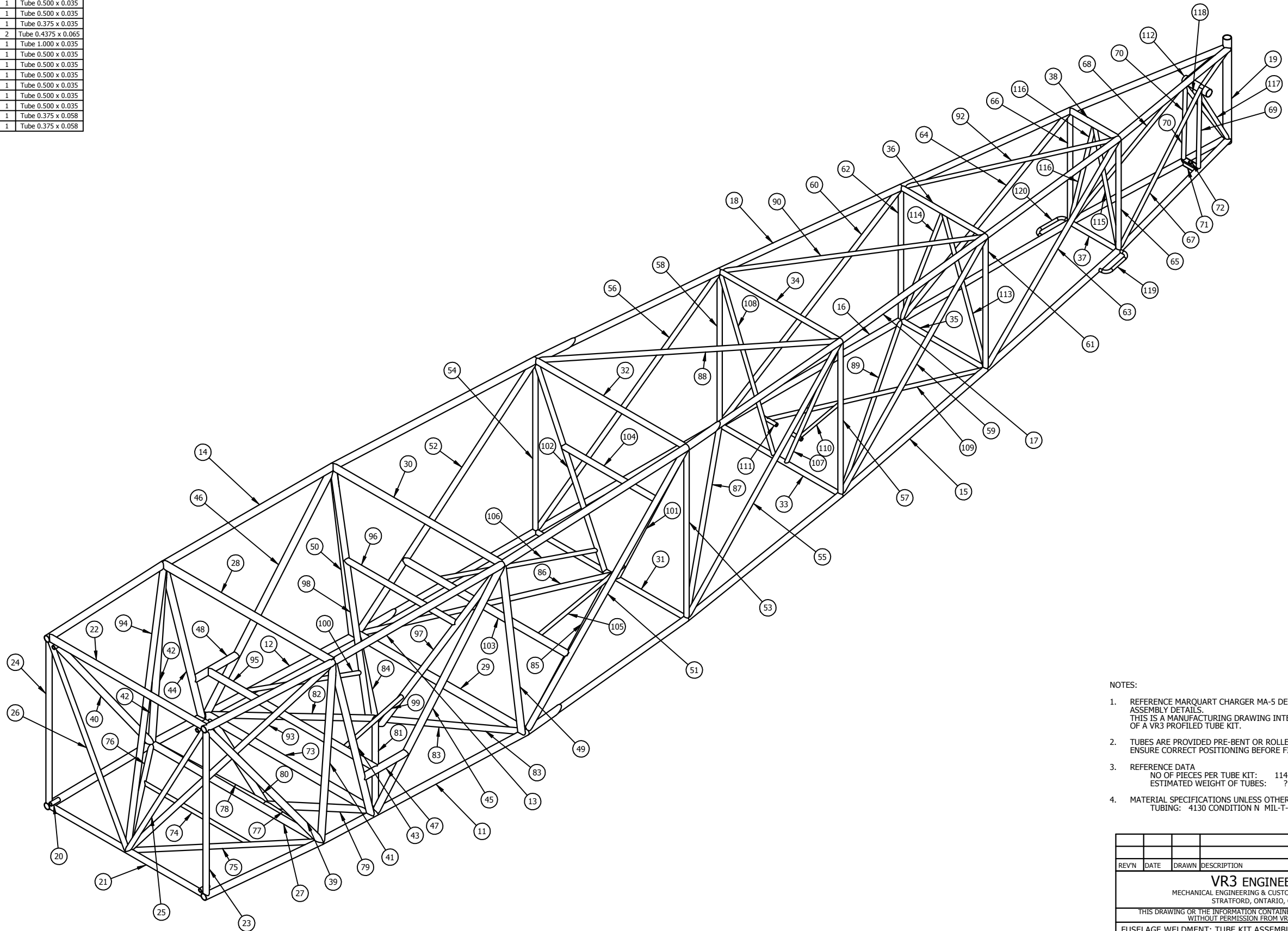


ITEM NO.	PARTNUMBER	QTY.	Description
11	39179-011	1	Tube 0.875 x 0.035
12	39179-012	1	Tube 0.875 x 0.035
13	39179-013	1	Tube 0.875 x 0.035
14	39179-014	1	Tube 0.875 x 0.035
15	39179-015	1	Tube 0.750 x 0.035
16	39179-016	1	Tube 0.750 x 0.035
17	39179-017	1	Tube 0.750 x 0.035
18	39179-018	1	Tube 0.750 x 0.035
19	39179-019	1	Tube 1.000 x 0.049
20	39179-020	4	Tube 0.500 x 0.065
21	39179-021	1	Tube 0.750 x 0.035
22	39179-022	1	Tube 0.875 x 0.035
23	39179-023	1	Tube 0.750 x 0.035
24	39179-024	1	Tube 0.750 x 0.035
25	39179-025	1	Tube 0.625 x 0.035
26	39179-026	1	Tube 0.625 x 0.035
27	39179-027	1	Tube 0.875 x 0.035
28	39179-028	1	Tube 1.000 x 0.049
29	39179-029	1	Tube 1.000 x 0.049
30	39179-030	1	Tube 0.875 x 0.035
31	39179-031	1	Tube 0.625 x 0.035
32	39179-032	1	Tube 0.750 x 0.035
33	39179-033	1	Tube 0.625 x 0.035
34	39179-034	1	Tube 0.625 x 0.035
35	39179-035	1	Tube 0.625 x 0.035
36	39179-036	1	Tube 0.625 x 0.035
37	39179-037	1	Tube 0.625 x 0.035
38	39179-038	1	Tube 0.750 x 0.049
39	39179-039	1	Tube 0.875 x 0.035
40	39179-040	1	Tube 0.875 x 0.035
41	39179-041	1	Tube 0.875 x 0.035
42	39179-042	1	Tube 0.875 x 0.035
43	39179-043	1	Tube 0.875 x 0.035
44	39179-044	1	Tube 0.875 x 0.035
45	39179-045	1	Tube 0.875 x 0.035
46	39179-046	1	Tube 0.875 x 0.035
47	39179-047	1	Tube 0.875 x 0.035
48	39179-048	1	Tube 0.875 x 0.035
49	39179-049	1	Tube 0.875 x 0.035
50	39179-050	1	Tube 0.875 x 0.035
51	39179-051	1	Tube 0.750 x 0.035
52	39179-052	1	Tube 0.750 x 0.035
53	39179-053	1	Tube 0.625 x 0.035
54	39179-054	1	Tube 0.625 x 0.035
55	39179-055	1	Tube 0.625 x 0.035
56	39179-056	1	Tube 0.625 x 0.035
57	39179-057	1	Tube 0.625 x 0.035
58	39179-058	1	Tube 0.625 x 0.035
59	39179-059	1	Tube 0.625 x 0.035
60	39179-060	1	Tube 0.625 x 0.035
61	39179-061	1	Tube 0.625 x 0.035
62	39179-062	1	Tube 0.625 x 0.035
63	39179-063	1	Tube 0.625 x 0.035
64	39179-064	1	Tube 0.625 x 0.035
65	39179-065	1	Tube 0.625 x 0.035
66	39179-066	1	Tube 0.625 x 0.035
67	39179-067	1	Tube 0.500 x 0.035
68	39179-068	1	Tube 0.500 x 0.035
69	39179-069	1	Tube 0.500 x 0.035
70	39179-070	1	Tube 0.500 x 0.035
71	39179-071	1	Tube 0.750 x 0.750 x 0.049
72	39179-072	1	Tube 0.500 x 0.065
73	39179-073	1	Tube 1.000 x 0.049
74	39179-074	1	Tube 0.500 x 0.035
75	39179-075	1	Tube 0.625 x 0.035
76	39179-076	1	Tube 0.625 x 0.035
77	39179-077	1	Tube 0.875 x 0.049
78	39179-078	1	Tube 0.875 x 0.049
79	39179-079	1	Tube 0.875 x 0.049
80	39179-080	1	Tube 0.875 x 0.049
81	39179-081	1	Tube 0.750 x 0.035
82	39179-082	1	Tube 0.750 x 0.035
83	39179-083	1	Tube 0.750 x 0.035
84	39179-084	1	Tube 0.750 x 0.035
85	39179-085	1	Tube 0.625 x 0.035
86	39179-086	1	Tube 0.625 x 0.035
87	39179-087	1	Tube 0.625 x 0.035
88	39179-088	1	Tube 0.625 x 0.035
89	39179-089	1	Tube 0.500 x 0.035
90	39179-090	1	Tube 0.500 x 0.035
91	39179-091	1	Tube 0.500 x 0.035
92	39179-092	1	Tube 0.500 x 0.035
93	39179-093	1	Tube 0.750 x 0.035
94	39179-094	1	Tube 0.750 x 0.035
95	39179-095	1	Tube 0.875 x 0.049
96	39179-096	1	Tube 0.750 x 0.049
97	39179-097	1	Tube 0.750 x 0.035
98	39179-098	1	Tube 0.750 x 0.035
99	39179-099	1	Tube 0.500 x 0.049
100	39179-100	1	Tube 0.500 x 0.049

ITEM NO.	PARTNUMBER	QTY.	Description
101	39179-101	1	Tube 0.625 x 0.035
102	39179-102	1	Tube 0.625 x 0.035
103	39179-103	1	Tube 0.875 x 0.049
104	39179-104	1	Tube 0.750 x 0.049
105	39179-105	1	Tube 0.500 x 0.049
106	39179-106	1	Tube 0.500 x 0.049
107	39179-107	1	Tube 0.500 x 0.035
108	39179-108	1	Tube 0.500 x 0.035
109	39179-109	1	Tube 0.500 x 0.035
110	39179-110	1	Tube 0.375 x 0.035
111	39179-111	2	Tube 0.4375 x 0.065
112	39179-112	1	Tube 1.000 x 0.035
113	39179-113	1	Tube 0.500 x 0.035
114	39179-114	1	Tube 0.500 x 0.035
115	39179-115	1	Tube 0.500 x 0.035
116	39179-116	1	Tube 0.500 x 0.035
117	39179-117	1	Tube 0.500 x 0.035
118	39179-118	1	Tube 0.500 x 0.035
119	39179-119	1	Tube 0.375 x 0.058
120	39179-120	1	Tube 0.375 x 0.058



- NOTES:
- REFERENCE MARQUART CHARGER MA-5 DESIGN DRAWINGS FOR COMPLETE ASSEMBLY DETAILS. THIS IS A MANUFACTURING DRAWING INTENDED TO ASSIST WELD ASSEMBLY OF A VR3 PROFILED TUBE KIT.
 - TUBES ARE PROVIDED PRE-BENT OR ROLLED READY FOR WELD ASSEMBLY ENSURE CORRECT POSITIONING BEFORE FINAL WELDING
 - REFERENCE DATA
NO OF PIECES PER TUBE KIT: 114 PCS
ESTIMATED WEIGHT OF TUBES: ? LBS
 - MATERIAL SPECIFICATIONS UNLESS OTHERWISE INDICATED
TUBING: 4130 CONDITION N MIL-T-6736B SEAMLESS AIRCRAFT

REV#	DATE	DRAWN	DESCRIPTION
VR3 ENGINEERING MECHANICAL ENGINEERING & CUSTOM MACHINE DESIGN STRAITFORD, ONTARIO, CANADA			
THIS DRAWING OR THE INFORMATION CONTAINED HEREIN MAY NOT BE REPRODUCED WITHOUT PERMISSION FROM VR3 ENGINEERING			
FUSELAGE WELDMENT: TUBE KIT ASSEMBLY			
MARQUART CHARGER MA-5			
ISOMETRIC VIEW			
DRAWN: JJ	DATE: OCT 23 08	PROJECT NO. 714-06	DRAWING NO. 39179-01
D'SCALE: 1:6			REV NO. X