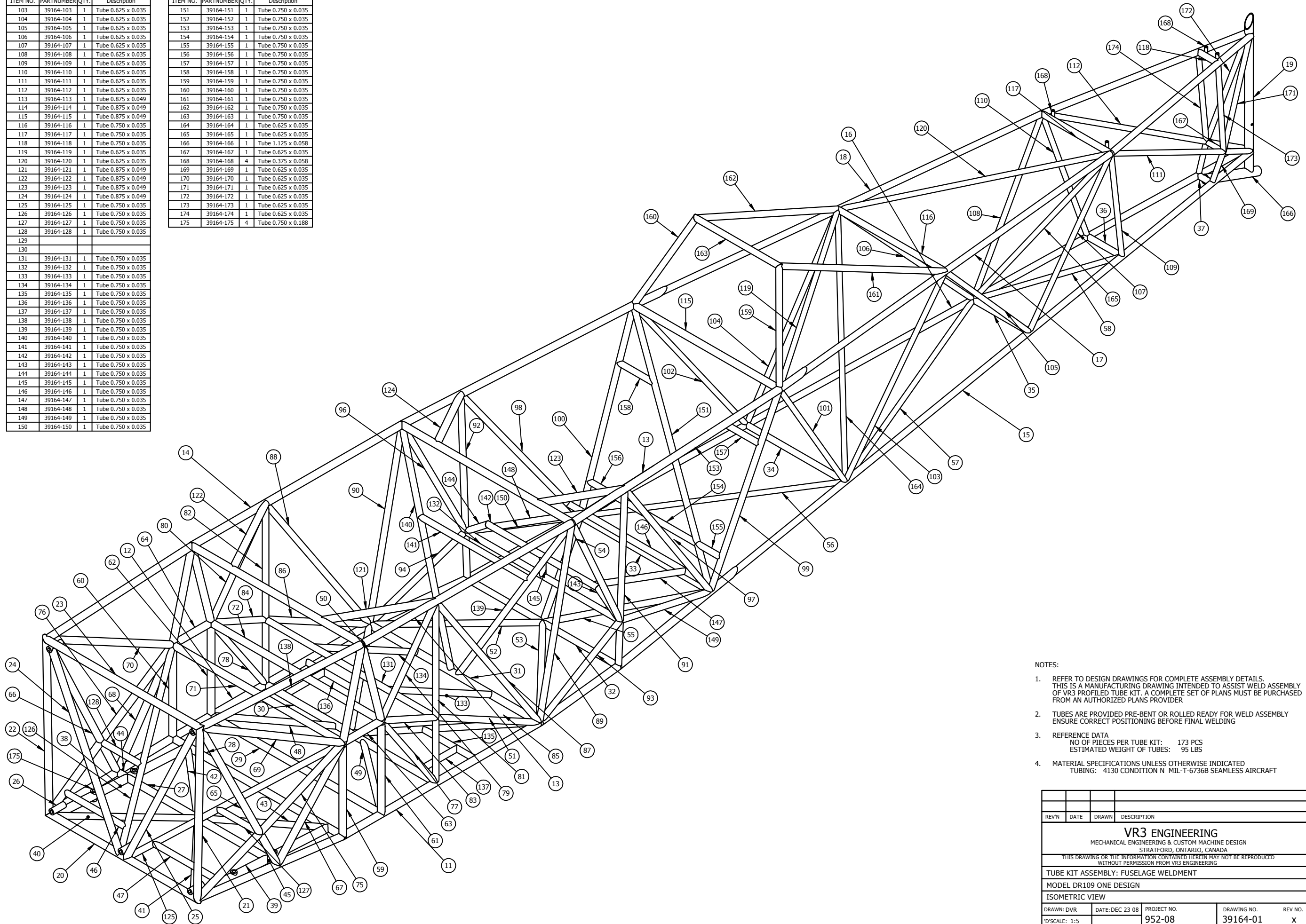


ITEM NO.	PARTNUMBER	QTY.	Description
11	39164-011	1	Tube 0.875 x 0.049
12	39164-012	1	Tube 0.875 x 0.049
13	39164-013	1	Tube 0.875 x 0.049
14	39164-014	1	Tube 0.875 x 0.049
15	39164-015	1	Tube 0.750 x 0.035
16	39164-016	1	Tube 0.750 x 0.035
17	39164-017	1	Tube 0.750 x 0.035
18	39164-018	1	Tube 0.750 x 0.035
19	39164-019	1	Tube 1.000 x 0.058
20	39164-020	1	Tube 0.875 x 0.049
21	39164-021	1	Tube 0.875 x 0.049
22	39164-022	1	Tube 0.875 x 0.049
23	39164-023	1	Tube 0.875 x 0.049
24	39164-024	1	Tube 0.875 x 0.049
25	39164-025	1	Tube 0.875 x 0.049
26	39164-026	5	Tube 0.750 x 0.188
27	39164-027	1	Tube 0.875 x 0.049
28	39164-028	1	Tube 0.875 x 0.049
29	39164-029	1	Tube 0.875 x 0.049
30	39164-030	1	Tube 0.875 x 0.049
31	39164-031	1	Tube 0.875 x 0.049
32	39164-032	1	Tube 0.750 x 0.035
33	39164-033	1	Tube 0.750 x 0.035
34	39164-034	1	Tube 0.750 x 0.035
35	39164-035	1	Tube 0.750 x 0.035
36	39164-036	1	Tube 0.750 x 0.035
37	39164-037	1	Tube 0.750 x 0.035
38	39164-038	1	Tube 1.000 x 0.065
39	39164-039	1	Tube 1.000 x 0.065
40	39164-040	1	Tube 0.750 x 0.035
41	39164-041	1	Tube 0.750 x 0.035
42	39164-042	1	Tube 0.750 x 0.035
43	39164-043	1	Tube 0.750 x 0.035
44	39164-044	1	Tube 0.875 x 0.049
45	39164-045	1	Tube 0.875 x 0.049
46	39164-046	1	Tube 0.750 x 0.035
47	39164-047	1	Tube 0.750 x 0.035
48	39164-048	1	Tube 0.750 x 0.035
49	39164-049	1	Tube 0.750 x 0.035
50	39164-050	1	Tube 0.750 x 0.035
51	39164-051	1	Tube 0.750 x 0.035
52	39164-052	1	Tube 0.750 x 0.035
53	39164-053	1	Tube 0.750 x 0.035
54	39164-054	1	Tube 0.750 x 0.035
55	39164-055	1	Tube 0.750 x 0.035
56	39164-056	1	Tube 0.625 x 0.035
57	39164-057	1	Tube 0.625 x 0.035
58	39164-058	1	Tube 0.625 x 0.035
59	39164-059	1	Tube 0.875 x 0.049
60	39164-060	1	Tube 0.875 x 0.049
61	39164-061	1	Tube 0.875 x 0.049
62	39164-062	1	Tube 0.875 x 0.049
63	39164-063	1	Tube 0.875 x 0.049
64	39164-064	1	Tube 0.875 x 0.049
65	39164-065	1	Tube 0.875 x 0.049
66	39164-066	1	Tube 0.875 x 0.049
67	39164-067	1	Tube 0.875 x 0.049
68	39164-068	1	Tube 0.875 x 0.049
69	39164-069	1	Tube 0.875 x 0.049
70	39164-070	1	Tube 0.875 x 0.049
71	39164-071	1	Tube 0.875 x 0.049
72	39164-072	1	Tube 0.875 x 0.049
73	39164-073	1	Tube 0.875 x 0.049
74	39164-074	1	Tube 0.875 x 0.049
75	39164-075	1	Tube 0.875 x 0.049
76	39164-076	1	Tube 0.875 x 0.049
77	39164-077	1	Tube 0.750 x 0.035
78	39164-078	1	Tube 0.750 x 0.035
79	39164-079	1	Tube 0.750 x 0.035
80	39164-080	1	Tube 0.750 x 0.035
81	39164-081	1	Tube 0.750 x 0.035
82	39164-082	1	Tube 0.750 x 0.035
83	39164-083	1	Tube 0.750 x 0.035
84	39164-084	1	Tube 0.750 x 0.035
85	39164-085	1	Tube 0.750 x 0.035
86	39164-086	1	Tube 0.750 x 0.035
87	39164-087	1	Tube 0.750 x 0.035
88	39164-088	1	Tube 0.750 x 0.035
89	39164-089	1	Tube 0.750 x 0.035
90	39164-090	1	Tube 0.750 x 0.035
91	39164-091	1	Tube 0.750 x 0.035
92	39164-092	1	Tube 0.750 x 0.035
93	39164-093	1	Tube 0.750 x 0.035
94	39164-094	1	Tube 0.750 x 0.035
95	39164-095	1	Tube 0.750 x 0.035
96	39164-096	1	Tube 0.750 x 0.035
97	39164-097	1	Tube 0.750 x 0.035
98	39164-098	1	Tube 0.750 x 0.035
99	39164-099	1	Tube 0.750 x 0.035
100	39164-100	1	Tube 0.750 x 0.035
101	39164-101	1	Tube 0.625 x 0.035
102	39164-102	1	Tube 0.625 x 0.035

ITEM NO.	PARTNUMBER	QTY.	Description
103	39164-103	1	Tube 0.625 x 0.035
104	39164-104	1	Tube 0.625 x 0.035
105	39164-105	1	Tube 0.625 x 0.035
106	39164-106	1	Tube 0.625 x 0.035
107	39164-107	1	Tube 0.625 x 0.035
108	39164-108	1	Tube 0.625 x 0.035
109	39164-109	1	Tube 0.625 x 0.035
110	39164-110	1	Tube 0.625 x 0.035
111	39164-111	1	Tube 0.625 x 0.035
112	39164-112	1	Tube 0.625 x 0.035
113	39164-113	1	Tube 0.875 x 0.049
114	39164-114	1	Tube 0.875 x 0.049
115	39164-115	1	Tube 0.875 x 0.049
116	39164-116	1	Tube 0.750 x 0.035
117	39164-117	1	Tube 0.750 x 0.035
118	39164-118	1	Tube 0.750 x 0.035
119	39164-119	1	Tube 0.625 x 0.035
120	39164-120	1	Tube 0.625 x 0.035
121	39164-121	1	Tube 0.875 x 0.049
122	39164-122	1	Tube 0.875 x 0.049
123	39164-123	1	Tube 0.875 x 0.049
124	39164-124	1	Tube 0.875 x 0.049
125	39164-125	1	Tube 0.750 x 0.035
126	39164-126	1	Tube 0.750 x 0.035
127	39164-127	1	Tube 0.750 x 0.035
128	39164-128	1	Tube 0.750 x 0.035
129			
130			
131	39164-131	1	Tube 0.750 x 0.035
132	39164-132	1	Tube 0.750 x 0.035
133	39164-133	1	Tube 0.750 x 0.035
134	39164-134	1	Tube 0.750 x 0.035
135	39164-135	1	Tube 0.750 x 0.035
136	39164-136	1	Tube 0.750 x 0.035
137	39164-137	1	Tube 0.750 x 0.035
138	39164-138	1	Tube 0.750 x 0.035
139	39164-139	1	Tube 0.750 x 0.035
140	39164-140	1	Tube 0.750 x 0.035
141	39164-141	1	Tube 0.750 x 0.035
142	39164-142	1	Tube 0.750 x 0.035
143	39164-143	1	Tube 0.750 x 0.035
144	39164-144	1	Tube 0.750 x 0.035
145	39164-145	1	Tube 0.750 x 0.035
146	39164-146	1	Tube 0.750 x 0.035
147	39164-147	1	Tube 0.750 x 0.035
148	39164-148	1	Tube 0.750 x 0.035
149	39164-149	1	Tube 0.750 x 0.035
150	39164-150	1	Tube 0.750 x 0.035

ITEM NO.	PARTNUMBER	QTY.	Description
151	39164-151	1	Tube 0.750 x 0.035
152	39164-152	1	Tube 0.750 x 0.035
153	39164-153	1	Tube 0.750 x 0.035
154	39164-154	1	Tube 0.750 x 0.035
155	39164-155	1	Tube 0.750 x 0.035
156	39164-156	1	Tube 0.750 x 0.035
157	39164-157	1	Tube 0.750 x 0.035
158	39164-158	1	Tube 0.750 x 0.035
159	39164-159	1	Tube 0.750 x 0.035
160	39164-160	1	Tube 0.750 x 0.035
161	39164-161	1	Tube 0.750 x 0.035
162	39164-162	1	Tube 0.750 x 0.035
163	39164-163	1	Tube 0.750 x 0.035
164	39164-164	1	Tube 0.625 x 0.035
165	39164-165	1	Tube 0.625 x 0.035
166	39164-166	1	Tube 1.125 x 0.058
167	39164-167	1	Tube 0.625 x 0.035
168	39164-168	4	Tube 0.375 x 0.058
169	39164-169	1	Tube 0.625 x 0.035
170	39164-170	1	Tube 0.625 x 0.035
171	39164-171	1	Tube 0.625 x 0.035
172	39164-172	1	Tube 0.625 x 0.035
173	39164-173	1	Tube 0.625 x 0.035
174	39164-174	1	Tube 0.625 x 0.035
175	39164-175	4	Tube 0.750 x 0.188



- NOTES:
- REFER TO DESIGN DRAWINGS FOR COMPLETE ASSEMBLY DETAILS. THIS IS A MANUFACTURING DRAWING INTENDED TO ASSIST WELD ASSEMBLY OF VR3 PROFILED TUBE KIT. A COMPLETE SET OF PLANS MUST BE PURCHASED FROM AN AUTHORIZED PLANS PROVIDER
  - TUBES ARE PROVIDED PRE-BENT OR ROLLED READY FOR WELD ASSEMBLY ENSURE CORRECT POSITIONING BEFORE FINAL WELDING
  - REFERENCE DATA  
NO OF PIECES PER TUBE KIT: 173 PCS  
ESTIMATED WEIGHT OF TUBES: 95 LBS
  - MATERIAL SPECIFICATIONS UNLESS OTHERWISE INDICATED  
TUBING: 4130 CONDITION N MIL-T-6736B SEAMLESS AIRCRAFT

REV#	DATE	DRAWN	DESCRIPTION
<b>VR3 ENGINEERING</b> MECHANICAL ENGINEERING & CUSTOM MACHINE DESIGN STRATFORD, ONTARIO, CANADA			
THIS DRAWING OR THE INFORMATION CONTAINED HEREIN MAY NOT BE REPRODUCED WITHOUT PERMISSION FROM VR3 ENGINEERING			
TUBE KIT ASSEMBLY: FUSELAGE WELDMENT			
MODEL DR109 ONE DESIGN			
ISOMETRIC VIEW			
DRAWN: DVR	DATE: DEC 23 08	PROJECT NO. 952-08	DRAWING NO. 39164-01
D'SCALE: 1:5			REV NO. x