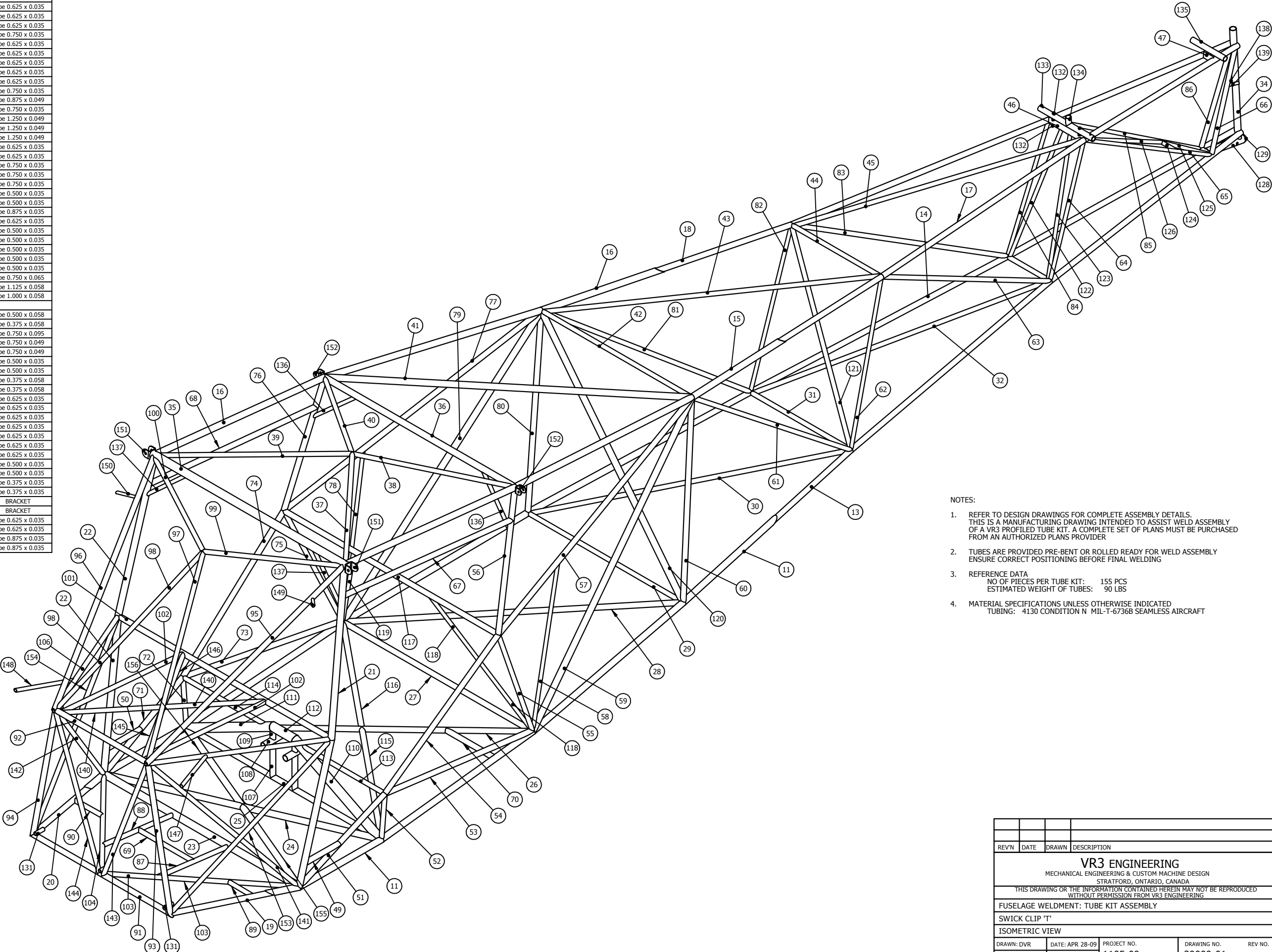


ITEM NO.	PARTNUMBER	QTY.	DESCRIPTION
11	39099-011	1	Tube 0.875 x 0.049
12	39099-012	1	Tube 0.875 x 0.049
13	39099-013	1	Tube 0.750 x 0.035
14	39099-014	1	Tube 0.750 x 0.035
15	39099-015	1	Tube 0.875 x 0.049
16	39099-016	1	Tube 0.875 x 0.049
17	39099-017	1	Tube 0.750 x 0.035
18	39099-018	1	Tube 0.750 x 0.035
19	39099-019	1	Tube 0.750 x 0.035
20	39099-020	1	Tube 0.750 x 0.035
21	39099-021	1	Tube 0.875 x 0.049
22	39099-022	1	Tube 0.875 x 0.049
23	39099-023	1	Tube 1.000 x 0.049
24	39099-024	1	Tube 1.000 x 0.035
25	39099-025	1	Tube 0.750 x 0.035
26	39099-026	1	Tube 0.750 x 0.035
27	39099-027	1	Tube 0.750 x 0.035
28	39099-028	1	Tube 0.750 x 0.035
29	39099-029	1	Tube 0.625 x 0.035
30	39099-030	1	Tube 0.625 x 0.035
31	39099-031	1	Tube 0.625 x 0.035
32	39099-032	1	Tube 0.625 x 0.035
33	39099-033	1	Tube 0.625 x 0.035
34	39099-034	1	Tube 0.875 x 0.049
35	39099-035	1	Tube 1.125 x 0.049
36	39099-036	1	Tube 0.875 x 0.049
37	39099-037	1	Tube 0.625 x 0.035
38	39099-038	1	Tube 0.625 x 0.035
39	39099-039	1	Tube 0.625 x 0.035
40	39099-040	1	Tube 0.625 x 0.035
41	39099-041	1	Tube 0.875 x 0.035
42	39099-042	1	Tube 0.625 x 0.035
43	39099-043	1	Tube 0.625 x 0.035
44	39099-044	1	Tube 0.625 x 0.035
45	39099-045	1	Tube 0.625 x 0.035
46	39099-046	1	Tube 0.750 x 0.058
47	39099-047	1	Tube 0.750 x 0.035
48			
49	39099-049	1	Tube 0.750 x 0.035
50	39099-050	1	Tube 0.750 x 0.035
51	39099-051	1	Tube 0.750 x 0.035
52	39099-052	1	Tube 0.625 x 0.035
53	39099-053	1	Tube 0.750 x 0.035
54	39099-054	1	Tube 0.750 x 0.035
55	39099-055	1	Tube 0.625 x 0.035
56	39099-056	1	Tube 0.750 x 0.035
57	39099-057	1	Tube 0.750 x 0.035
58	39099-058	1	Tube 0.500 x 0.035
59	39099-059	1	Tube 0.875 x 0.035
60	39099-060	1	Tube 0.750 x 0.035
61	39099-061	1	Tube 0.625 x 0.035
62	39099-062	1	Tube 0.500 x 0.035
63	39099-063	1	Tube 0.625 x 0.035
64	39099-064	1	Tube 0.500 x 0.035
65	39099-065	1	Tube 0.500 x 0.035
66	39099-066	1	Tube 0.625 x 0.035
67	39099-067	1	Tube 0.750 x 0.035
68	39099-068	1	Tube 0.750 x 0.035
69	39099-069	1	Tube 0.625 x 0.035
70	39099-070	1	Tube 0.750 x 0.035
71	39099-071	1	Tube 0.750 x 0.035
72	39099-072	1	Tube 0.625 x 0.035
73	39099-073	1	Tube 0.750 x 0.035
74	39099-074	1	Tube 0.750 x 0.035
75	39099-075	1	Tube 0.625 x 0.035
76	39099-076	1	Tube 0.750 x 0.035
77	39099-077	1	Tube 0.750 x 0.035
78	39099-078	1	Tube 0.500 x 0.035
79	39099-079	1	Tube 0.875 x 0.035
80	39099-080	1	Tube 0.750 x 0.035
81	39099-081	1	Tube 0.625 x 0.035
82	39099-082	1	Tube 0.500 x 0.035
83	39099-083	1	Tube 0.625 x 0.035
84	39099-084	1	Tube 0.500 x 0.035
85	39099-085	1	Tube 0.500 x 0.035
86	39099-086	1	Tube 0.625 x 0.035
87	39099-087	1	Tube 0.625 x 0.035
88	39099-088	1	Tube 0.625 x 0.035
89	39099-089	1	Tube 0.625 x 0.035
90	39099-090	1	Tube 0.625 x 0.035
91	39099-091	1	Tube 0.750 x 0.049
92	39099-092	1	Tube 0.750 x 0.049
93	39099-093	1	Tube 0.750 x 0.049
94	39099-094	1	Tube 0.750 x 0.049
95	39099-095	1	Tube 0.750 x 0.035
96	39099-096	1	Tube 0.750 x 0.035

ITEM NO.	PARTNUMBER	QTY.	DESCRIPTION
97	39099-097	1	Tube 0.625 x 0.035
98	39099-098	1	Tube 0.625 x 0.035
99	39099-099	1	Tube 0.625 x 0.035
100	39099-100	1	Tube 0.625 x 0.035
101	39099-101	1	Tube 0.750 x 0.035
102	39099-102	2	Tube 0.625 x 0.035
103	39099-103	1	Tube 0.625 x 0.035
104	39099-104	1	Tube 0.625 x 0.035
105	39099-105	1	Tube 0.625 x 0.035
106	39099-106	1	Tube 0.625 x 0.035
107	39099-107	2	Tube 0.750 x 0.035
108	39099-108	2	Tube 0.875 x 0.049
109	39099-109	2	Tube 0.750 x 0.035
110	39099-110	1	Tube 1.250 x 0.049
111	39099-111	1	Tube 1.250 x 0.049
112	39099-112	1	Tube 1.250 x 0.049
113	39099-113	1	Tube 0.625 x 0.035
114	39099-114	1	Tube 0.625 x 0.035
115	39099-115	1	Tube 0.750 x 0.035
116	39099-116	1	Tube 0.750 x 0.035
117	39099-117	1	Tube 0.750 x 0.035
118	39099-118	1	Tube 0.500 x 0.035
119	39099-119	1	Tube 0.500 x 0.035
120	39099-120	1	Tube 0.875 x 0.035
121	39099-121	1	Tube 0.625 x 0.035
122	39099-122	1	Tube 0.500 x 0.035
123	39099-123	1	Tube 0.500 x 0.035
124	39099-124	1	Tube 0.500 x 0.035
125	39099-125	1	Tube 0.500 x 0.035
126	39099-126	1	Tube 0.500 x 0.035
127	39099-127	1	Tube 0.750 x 0.065
128	39099-128	1	Tube 1.125 x 0.058
129	39099-129	1	Tube 1.000 x 0.058
130			
131	39099-131	5	Tube 0.500 x 0.058
132	39099-132	4	Tube 0.375 x 0.058
133	39099-133	1	Tube 0.750 x 0.095
134	39099-134	1	Tube 0.750 x 0.049
135	39099-135	1	Tube 0.750 x 0.049
136	39099-136	2	Tube 0.500 x 0.035
137	39099-137	2	Tube 0.500 x 0.035
138	39099-138	1	Tube 0.375 x 0.058
139	39099-139	1	Tube 0.375 x 0.058
140	39099-140	1	Tube 0.625 x 0.035
141	39099-141	1	Tube 0.625 x 0.035
142	39099-142	1	Tube 0.625 x 0.035
143	39099-143	1	Tube 0.625 x 0.035
144	39099-144	1	Tube 0.625 x 0.035
145	39099-145	1	Tube 0.625 x 0.035
146	39099-146	1	Tube 0.625 x 0.035
147	39099-147	1	Tube 0.500 x 0.035
148	39099-148	1	Tube 0.500 x 0.035
149	39099-149	1	Tube 0.375 x 0.035
150	39099-150	1	Tube 0.375 x 0.035
151	39099-151	2	BRACKET
152	39099-152	2	BRACKET
153	39099-153	1	Tube 0.625 x 0.035
154	39099-154	1	Tube 0.625 x 0.035
155	39099-155	1	Tube 0.875 x 0.035
156	39099-156	1	Tube 0.875 x 0.035



- NOTES:
- REFER TO DESIGN DRAWINGS FOR COMPLETE ASSEMBLY DETAILS. THIS IS A MANUFACTURING DRAWING INTENDED TO ASSIST WELD ASSEMBLY OF A VR3 PROFILED TUBE KIT. A COMPLETE SET OF PLANS MUST BE PURCHASED FROM AN AUTHORIZED PLANS PROVIDER
  - TUBES ARE PROVIDED PRE-BENT OR ROLLED READY FOR WELD ASSEMBLY ENSURE CORRECT POSITIONING BEFORE FINAL WELDING
  - REFERENCE DATA  
NO OF PIECES PER TUBE KIT: 155 PCS  
ESTIMATED WEIGHT OF TUBES: 90 LBS
  - MATERIAL SPECIFICATIONS UNLESS OTHERWISE INDICATED  
TUBING: 4130 CONDITION N MIL-T-6736B SEAMLESS AIRCRAFT

REV#	DATE	DRAWN	DESCRIPTION
<b>VR3 ENGINEERING</b> MECHANICAL ENGINEERING & CUSTOM MACHINE DESIGN STRATFORD, ONTARIO, CANADA			
THIS DRAWING OR THE INFORMATION CONTAINED HEREIN MAY NOT BE REPRODUCED WITHOUT PERMISSION FROM VR3 ENGINEERING			
FUSELAGE WELDMENT: TUBE KIT ASSEMBLY			
SWICK CLIP 'T'			
ISOMETRIC VIEW			
DRAWN: DVR	DATE: APR 28-09	PROJECT NO. 1105-09	DRAWING NO. 39099-01
DSCALE: 1:6			REV NO. x