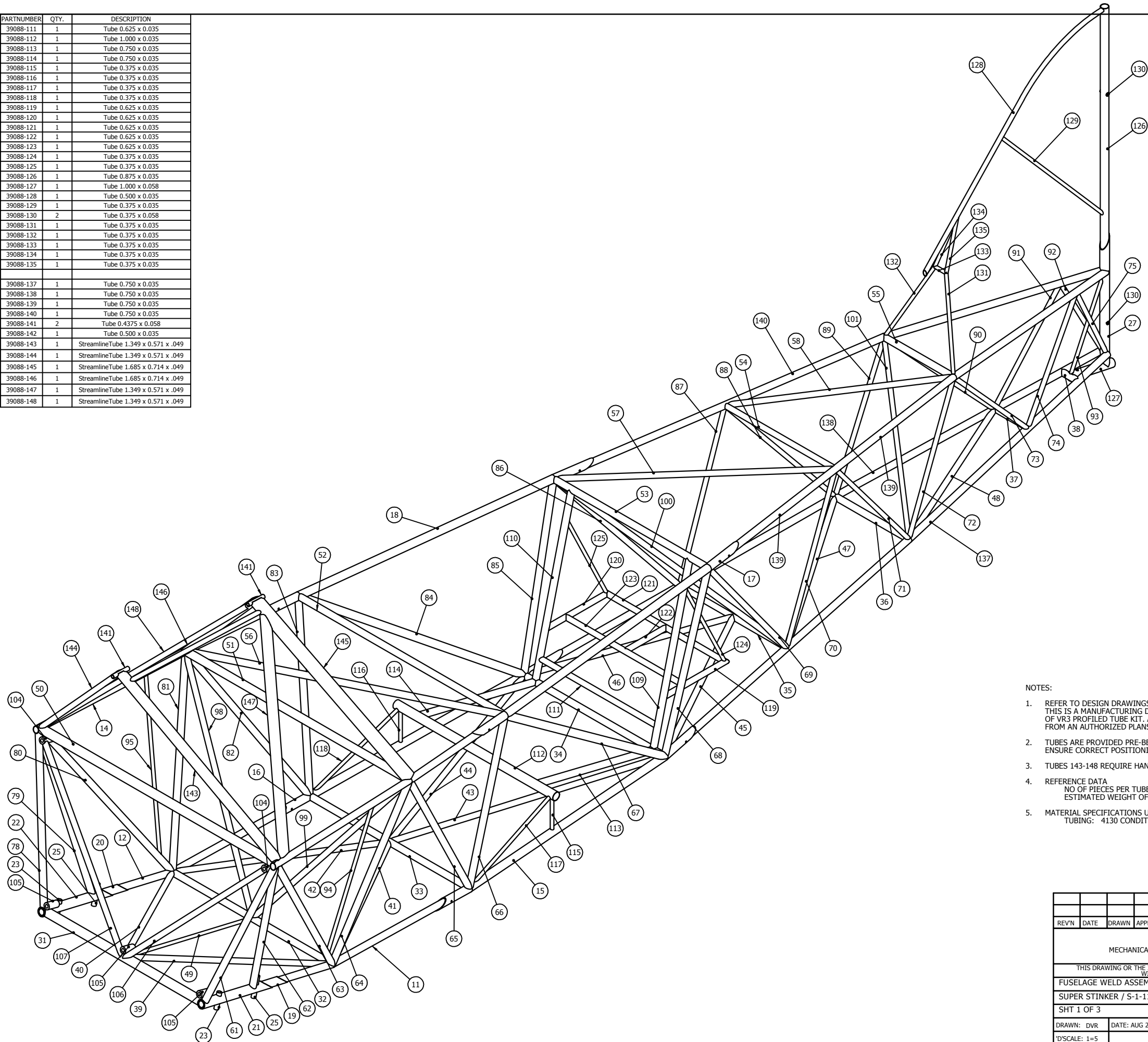


ITEM NO.	PARTNUMBER	QTY.	DESCRIPTION
11	39088-011	1	Tube 0.750 x 0.035
12	39088-012	1	Tube 0.750 x 0.035
13	39088-013	1	Tube 0.750 x 0.035
14	39088-014	1	Tube 0.750 x 0.035
15	39088-015	1	Tube 0.875 x 0.058
16	39088-016	1	Tube 0.875 x 0.058
17	39088-017	1	Tube 0.875 x 0.058
18	39088-018	1	Tube 0.875 x 0.058
19	39088-019	1	Tube 0.875 x 0.058
20	39088-020	1	Tube 0.875 x 0.058
21	39088-021	1	Tube 1.000 x 0.058
22	39088-022	1	Tube 1.000 x 0.058
23	39088-023	2	Tube 0.500 x 0.058
24			
25	39088-025	2	Tube 0.500 x 0.058
26			
27	39088-027	1	Tube 1.000 x 0.035
28			
29			
30			
31	39088-031	1	Tube 1.000 x 0.058
32	39088-032	1	Tube 0.750 x 0.049
33	39088-033	1	Tube 0.750 x 0.035
34	39088-034	1	Tube 0.750 x 0.035
35	39088-035	1	Tube 0.625 x 0.035
36	39088-036	1	Tube 0.750 x 0.035
37	39088-037	1	Tube 0.500 x 0.049
38	39088-038	1	Tube 0.750 x 0.049
39	39088-039	1	Tube 0.625 x 0.049
40	39088-040	1	Tube 0.625 x 0.049
41	39088-041	1	Tube 0.625 x 0.035
42	39088-042	1	Tube 0.625 x 0.035
43	39088-043	1	Tube 0.625 x 0.035
44	39088-044	1	Tube 0.625 x 0.035
45	39088-045	1	Tube 0.625 x 0.035
46	39088-046	1	Tube 0.625 x 0.035
47	39088-047	1	Tube 0.625 x 0.035
48	39088-048	1	Tube 0.625 x 0.035
49	39088-049	1	Tube 0.375 x 0.035
50	39088-050	1	Tube 1.000 x 0.058
51	39088-051	1	Tube 0.875 x 0.035
52	39088-052	1	Tube 0.750 x 0.035
53	39088-053	1	Tube 0.750 x 0.035
54	39088-054	1	Tube 0.625 x 0.035
55	39088-055	1	Tube 0.750 x 0.035
56	39088-056	1	Tube 0.750 x 0.035
57	39088-057	1	Tube 0.625 x 0.035
58	39088-058	1	Tube 0.625 x 0.035
59			
60			
61	39088-061	1	Tube 0.750 x 0.049
62	39088-062	1	Tube 0.750 x 0.049
63	39088-063	1	Tube 0.750 x 0.049
64	39088-064	1	Tube 0.750 x 0.035
65	39088-065	1	Tube 0.750 x 0.035
66	39088-066	1	Tube 0.750 x 0.035
67	39088-067	1	Tube 0.875 x 0.035
68	39088-068	1	Tube 0.750 x 0.035
69	39088-069	1	Tube 0.625 x 0.035
70	39088-070	1	Tube 0.500 x 0.035
71	39088-071	1	Tube 0.500 x 0.035
72	39088-072	1	Tube 0.500 x 0.035
73	39088-073	1	Tube 0.500 x 0.035
74	39088-074	1	Tube 0.500 x 0.035
75	39088-075	1	Tube 0.500 x 0.035
76			
77			
78	39088-078	1	Tube 0.750 x 0.049
79	39088-079	1	Tube 0.750 x 0.049
80	39088-080	1	Tube 0.750 x 0.049
81	39088-081	1	Tube 0.750 x 0.035
82	39088-082	1	Tube 0.750 x 0.035
83	39088-083	1	Tube 0.750 x 0.035
84	39088-084	1	Tube 0.875 x 0.035
85	39088-085	1	Tube 0.750 x 0.035
86	39088-086	1	Tube 0.625 x 0.035
87	39088-087	1	Tube 0.500 x 0.035
88	39088-088	1	Tube 0.500 x 0.035
89	39088-089	1	Tube 0.500 x 0.035
90	39088-090	1	Tube 0.500 x 0.035
91	39088-091	1	Tube 0.500 x 0.035
92	39088-092	1	Tube 0.500 x 0.035
93	39088-093	1	Tube 0.375 x 0.035
94	39088-094	1	Tube 0.375 x 0.035
95	39088-095	1	Tube 0.375 x 0.035
96			
97			
98	39088-098	1	Tube 0.625 x 0.035
99	39088-099	1	Tube 0.625 x 0.035
100	39088-100	1	Tube 0.625 x 0.035
101	39088-101	1	Tube 0.500 x 0.035
102			
103			
104	39088-104	2	Tube 0.750 x 0.188
105	39088-105	3	Tube 0.750 x 0.188
106	39088-106	1	Tube 0.625 x 0.035
107	39088-107	1	Tube 0.625 x 0.035
108			
109	39088-109	1	Tube 0.750 x 0.035
110	39088-110	1	Tube 0.750 x 0.035

ITEM NO.	PARTNUMBER	QTY.	DESCRIPTION
111	39088-111	1	Tube 0.625 x 0.035
112	39088-112	1	Tube 1.000 x 0.035
113	39088-113	1	Tube 0.750 x 0.035
114	39088-114	1	Tube 0.750 x 0.035
115	39088-115	1	Tube 0.375 x 0.035
116	39088-116	1	Tube 0.375 x 0.035
117	39088-117	1	Tube 0.375 x 0.035
118	39088-118	1	Tube 0.375 x 0.035
119	39088-119	1	Tube 0.625 x 0.035
120	39088-120	1	Tube 0.625 x 0.035
121	39088-121	1	Tube 0.625 x 0.035
122	39088-122	1	Tube 0.625 x 0.035
123	39088-123	1	Tube 0.625 x 0.035
124	39088-124	1	Tube 0.375 x 0.035
125	39088-125	1	Tube 0.375 x 0.035
126	39088-126	1	Tube 0.875 x 0.035
127	39088-127	1	Tube 1.000 x 0.058
128	39088-128	1	Tube 0.500 x 0.035
129	39088-129	1	Tube 0.375 x 0.035
130	39088-130	2	Tube 0.375 x 0.058
131	39088-131	1	Tube 0.375 x 0.035
132	39088-132	1	Tube 0.375 x 0.035
133	39088-133	1	Tube 0.375 x 0.035
134	39088-134	1	Tube 0.375 x 0.035
135	39088-135	1	Tube 0.375 x 0.035
136			
137	39088-137	1	Tube 0.750 x 0.035
138	39088-138	1	Tube 0.750 x 0.035
139	39088-139	1	Tube 0.750 x 0.035
140	39088-140	1	Tube 0.750 x 0.035
141	39088-141	2	Tube 0.4375 x 0.058
142	39088-142	1	Tube 0.500 x 0.035
143	39088-143	1	StreamlineTube 1.349 x 0.571 x .049
144	39088-144	1	StreamlineTube 1.349 x 0.571 x .049
145	39088-145	1	StreamlineTube 1.685 x 0.714 x .049
146	39088-146	1	StreamlineTube 1.685 x 0.714 x .049
147	39088-147	1	StreamlineTube 1.349 x 0.571 x .049
148	39088-148	1	StreamlineTube 1.349 x 0.571 x .049



- NOTES:
- REFER TO DESIGN DRAWINGS FOR COMPLETE ASSEMBLY DETAILS
THIS IS A MANUFACTURING DRAWING INTENDED TO ASSIST WELD ASSEMBLY OF VR3 PROFILED TUBE KIT. A COMPLETE SET OF PLANS MUST BE PURCHASED FROM AN AUTHORIZED PLANS PROVIDER
 - TUBES ARE PROVIDED PRE-BENT OR ROLLED READY FOR WELD ASSEMBLY
ENSURE CORRECT POSITIONING BEFORE FINAL WELDING
 - TUBES 143-148 REQUIRE HAND TRIMMING AT ASSEMBLY
 - REFERENCE DATA
NO OF PIECES PER TUBE KIT: 130 PCS
ESTIMATED WEIGHT OF TUBES: 67.5 LBS
 - MATERIAL SPECIFICATIONS UNLESS OTHERWISE INDICATED
TUBING: 4130 CONDITION N MIL-T-6736B SEAMLESS AIRCRAFT

REV#	DATE	DRAWN	APPRVD	DESCRIPTION
VR3 ENGINEERING MECHANICAL ENGINEERING & CUSTOM MACHINE DESIGN STRATFORD, ONTARIO, CANADA				
THIS DRAWING OR THE INFORMATION CONTAINED HEREIN MAY NOT BE REPRODUCED WITHOUT PERMISSION FROM VR3 ENGINEERING				
FUSELAGE WELD ASSEMBLY: PROFILED TUBE KIT				
SUPER STINKER / S-1-11 REF DWG NO 11-210 , 7 SHTS				
SHT 1 OF 3				
DRAWN: DVR	DATE: AUG 28 09	PROJECT NO.	DRAWING NO.	REV NO.
DSCALE: 1=5		1132-09	39088-01	0