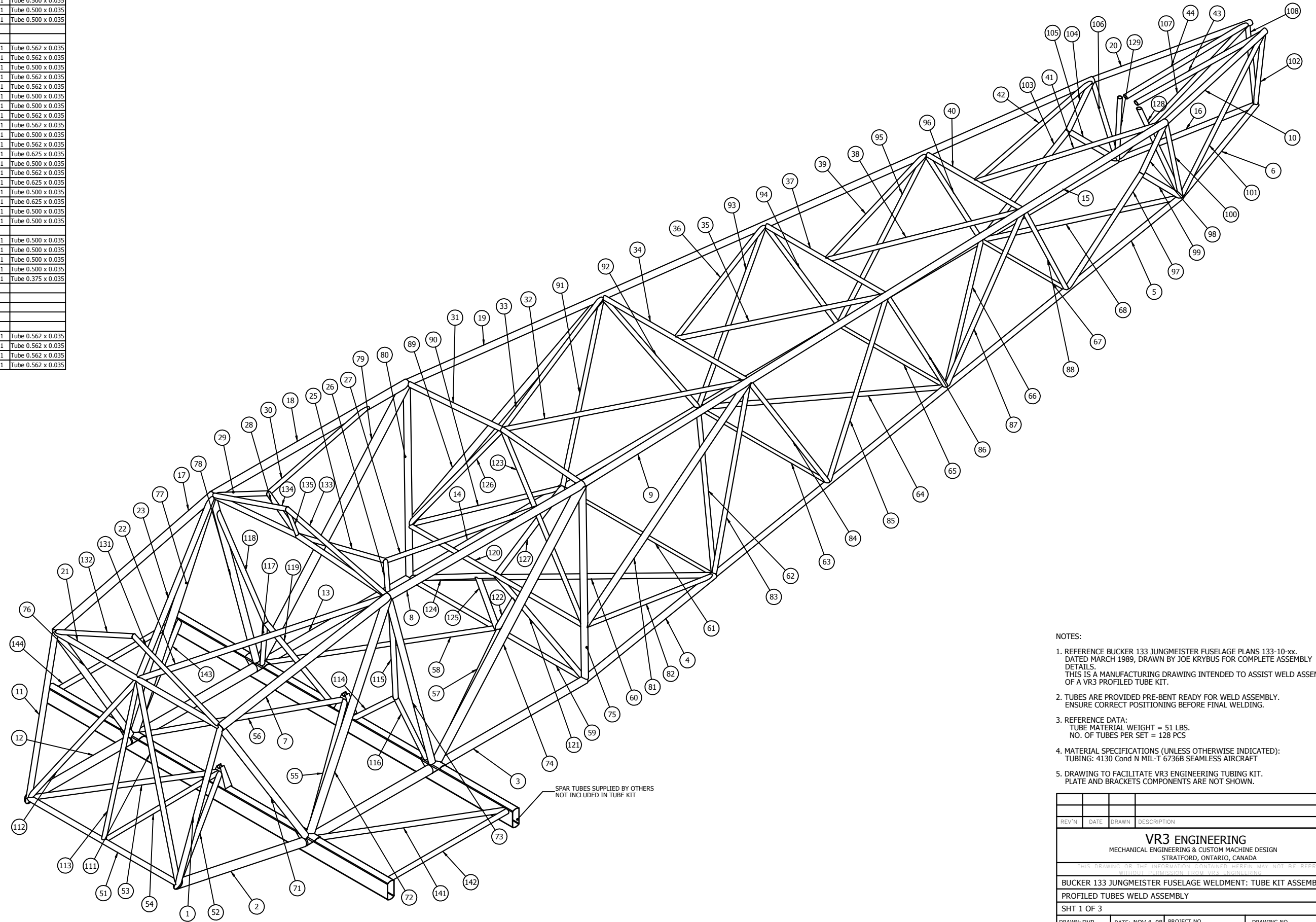


ITEM NO.	PARTNUMBER	QTY.	Description
1	39083-001	1	Tube 0.625 x 0.035
2	39083-002	1	Tube 1.000 x 0.035
3	39083-003	1	Tube 0.875 x 0.035
4	39083-004	1	Tube 0.750 x 0.035
5	39083-005	1	Tube 0.625 x 0.035
6	39083-006	1	Tube 0.562 x 0.035
7	39083-007	1	Tube 0.875 x 0.035
8	39083-008	1	Tube 0.875 x 0.035
9	39083-009	1	Tube 0.750 x 0.035
10	39083-010	1	Tube 0.625 x 0.035
11	39083-011	1	Tube 0.625 x 0.035
12	39083-012	1	Tube 1.000 x 0.035
13	39083-013	1	Tube 0.875 x 0.035
14	39083-014	1	Tube 0.750 x 0.035
15	39083-015	1	Tube 0.625 x 0.035
16	39083-016	1	Tube 0.562 x 0.035
17	39083-017	1	Tube 0.875 x 0.035
18	39083-018	1	Tube 0.875 x 0.035
19	39083-019	1	Tube 0.750 x 0.035
20	39083-020	1	Tube 0.625 x 0.035
21	39083-021	1	Tube 0.625 x 0.035
22	39083-022	1	Tube 0.625 x 0.035
23	39083-023	1	Tube 0.625 x 0.035
24	39083-024	1	Tube 0.562 x 0.035
25	39083-025	1	Tube 0.500 x 0.035
26	39083-026	1	Tube 0.500 x 0.035
27	39083-027	1	Tube 0.500 x 0.035
28	39083-028	1	Tube 0.500 x 0.035
29	39083-029	1	Tube 0.500 x 0.035
30	39083-030	1	Tube 0.500 x 0.035
31	39083-031	1	Tube 0.562 x 0.035
32	39083-032	1	Tube 0.500 x 0.035
33	39083-033	1	Tube 0.500 x 0.035
34	39083-034	1	Tube 0.500 x 0.035
35	39083-035	1	Tube 0.500 x 0.035
36	39083-036	1	Tube 0.500 x 0.035
37	39083-037	1	Tube 0.500 x 0.035
38	39083-038	1	Tube 0.500 x 0.035
39	39083-039	1	Tube 0.500 x 0.035
40	39083-040	1	Tube 0.500 x 0.035
41	39083-041	1	Tube 0.500 x 0.035
42	39083-042	1	Tube 0.500 x 0.035
43	39083-043	1	Tube 0.562 x 0.035
44	39083-044	1	Tube 0.562 x 0.035
45			
46			
47			
48			
49			
50			
51	39083-051	1	Tube 0.625 x 0.035
52	39083-052	1	Tube 0.562 x 0.035
53	39083-053	1	Tube 0.562 x 0.035
54	39083-054	1	Tube 0.500 x 0.035
55	39083-055	1	Tube 0.562 x 0.035
56	39083-056	1	Tube 0.562 x 0.035
57	39083-057	1	Tube 0.500 x 0.035
58	39083-058	1	Tube 0.500 x 0.035
59	39083-059	1	Tube 0.500 x 0.035
60	39083-060	1	Tube 0.562 x 0.035
61	39083-061	1	Tube 0.375 x 0.035
62	39083-062	1	Tube 0.500 x 0.035
63	39083-063	1	Tube 0.375 x 0.035
64	39083-064	1	Tube 0.500 x 0.035
65	39083-065	1	Tube 0.375 x 0.035
66	39083-066	1	Tube 0.500 x 0.035
67	39083-067	1	Tube 0.375 x 0.035
68	39083-068	1	Tube 0.500 x 0.035
69			
70			
71	39083-071	1	Tube 0.750 x 0.035
72	39083-072	1	Tube 0.875 x 0.035
73	39083-073	1	Tube 0.750 x 0.049
74	39083-074	1	Tube 1.000 x 0.035
75	39083-075	1	Tube 0.750 x 0.035
76	39083-076	1	Tube 0.750 x 0.035
77	39083-077	1	Tube 0.875 x 0.035
78	39083-078	1	Tube 0.750 x 0.049
79	39083-079	1	Tube 1.000 x 0.035
80	39083-080	1	Tube 0.750 x 0.035
81	39083-081	1	Tube 0.750 x 0.035
82	39083-082	1	Tube 0.500 x 0.035
83	39083-083	1	Tube 0.500 x 0.035
84	39083-084	1	Tube 0.500 x 0.035
85	39083-085	1	Tube 0.500 x 0.035
86	39083-086	1	Tube 0.500 x 0.035
87	39083-087	1	Tube 0.500 x 0.035
88	39083-088	1	Tube 0.500 x 0.035
89	39083-089	1	Tube 0.750 x 0.035
90	39083-090	1	Tube 0.500 x 0.035
91	39083-091	1	Tube 0.500 x 0.035
92	39083-092	1	Tube 0.500 x 0.035
93	39083-093	1	Tube 0.500 x 0.035
94	39083-094	1	Tube 0.500 x 0.035
95	39083-095	1	Tube 0.500 x 0.035
96	39083-096	1	Tube 0.500 x 0.035
97	39083-097	1	Tube 0.562 x 0.035
98	39083-098	1	Tube 0.562 x 0.035
99	39083-099	1	Tube 0.562 x 0.035
100	39083-100	1	Tube 0.500 x 0.035

ITEM NO.	PARTNUMBER	QTY.	Description
101	39083-101	1	Tube 0.500 x 0.035
102	39083-102	1	Tube 0.500 x 0.035
103	39083-103	1	Tube 0.562 x 0.035
104	39083-104	1	Tube 0.562 x 0.035
105	39083-105	1	Tube 0.562 x 0.035
106	39083-106	1	Tube 0.500 x 0.035
107	39083-107	1	Tube 0.500 x 0.035
108	39083-108	1	Tube 0.500 x 0.035
109			
110			
111	39083-111	1	Tube 0.562 x 0.035
112	39083-112	1	Tube 0.562 x 0.035
113	39083-113	1	Tube 0.500 x 0.035
114	39083-114	1	Tube 0.562 x 0.035
115	39083-115	1	Tube 0.562 x 0.035
116	39083-116	1	Tube 0.500 x 0.035
117	39083-117	1	Tube 0.500 x 0.035
118	39083-118	1	Tube 0.562 x 0.035
119	39083-119	1	Tube 0.562 x 0.035
120	39083-120	1	Tube 0.500 x 0.035
121	39083-121	1	Tube 0.562 x 0.035
122	39083-122	1	Tube 0.625 x 0.035
123	39083-123	1	Tube 0.500 x 0.035
124	39083-124	1	Tube 0.562 x 0.035
125	39083-125	1	Tube 0.625 x 0.035
126	39083-126	1	Tube 0.500 x 0.035
127	39083-127	1	Tube 0.625 x 0.035
128	39083-128	1	Tube 0.500 x 0.035
129	39083-129	1	Tube 0.500 x 0.035
130			
131	39083-131	1	Tube 0.500 x 0.035
132	39083-132	1	Tube 0.500 x 0.035
133	39083-133	1	Tube 0.500 x 0.035
134	39083-134	1	Tube 0.500 x 0.035
135	39083-135	1	Tube 0.375 x 0.035
136			
137			
138			
139			
140			
141	39083-141	1	Tube 0.562 x 0.035
142	39083-142	1	Tube 0.562 x 0.035
143	39083-143	1	Tube 0.562 x 0.035
144	39083-144	1	Tube 0.562 x 0.035



- NOTES:
- REFERENCE BUCKER 133 JUNGMEISTER FUSELAGE PLANS 133-10-xx. DATED MARCH 1989, DRAWN BY JOE KRYBUS FOR COMPLETE ASSEMBLY DETAILS. THIS IS A MANUFACTURING DRAWING INTENDED TO ASSIST WELD ASSEMBLY OF A VR3 PROFILED TUBE KIT.
 - TUBES ARE PROVIDED PRE-BENT READY FOR WELD ASSEMBLY. ENSURE CORRECT POSITIONING BEFORE FINAL WELDING.
 - REFERENCE DATA:
TUBE MATERIAL WEIGHT = 51 LBS.
NO. OF TUBES PER SET = 128 PCS
 - MATERIAL SPECIFICATIONS (UNLESS OTHERWISE INDICATED):
TUBING: 4130 Cond N MIL-T 6736B SEAMLESS AIRCRAFT
 - DRAWING TO FACILITATE VR3 ENGINEERING TUBING KIT. PLATE AND BRACKETS COMPONENTS ARE NOT SHOWN.

REV#	DATE	DRAWN	DESCRIPTION
VR3 ENGINEERING MECHANICAL ENGINEERING & CUSTOM MACHINE DESIGN STRATFORD, ONTARIO, CANADA			
THIS DRAWING OR THE INFORMATION CONTAINED HEREIN MAY NOT BE REPRODUCED WITHOUT PERMISSION FROM VR3 ENGINEERING			
BUCKER 133 JUNGMEISTER FUSELAGE WELDMENT: TUBE KIT ASSEMBLY			
PROFILED TUBES WELD ASSEMBLY			
SHT 1 OF 3			
DRAWN: DVR	DATE: NOV 4, 08	PROJECT NO. 1022-08	DRAWING NO. 39083-01
DSCALE: 1:6			REV NO. 0